



Track Mount

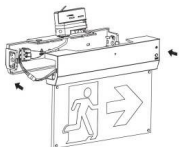
1.Remove the bracket with a flat screwdriver.



2.Connect the AC supply wires to the terminal,plug it onto the PCBA, and connect the battery.



3.Snap the luminaire onto the mounting bracket.



4.Fix the track adaptor onto track, turn clockwise or anti.



Status indication for Self-Testing

System status is indicated by a bi-colour LED and by a DALI status flag.

| LED indication | Status | Commentary |
|---|------------------------|---|
| Permanent green | System OK | |
| Fast flashing green (0.1 sec. on-0.1 sec. off) | Function test underway | |
| Slow flashing green (1 sec. on – 1 sec. off) | Duration test | |
| Red LED on | Load failure | Open circuit / Short circuit / LED failure |
| Slow flashing red (1 sec. on-1 sec. off) | Battery failure | Battery failed the duration test or function test/ Battery is defect / Incorrect battery voltage |
| Fast flashing red (0.1 sec. on-0.1 sec. off) | Charging failure | Incorrect charging current |
| Double pulsing green | Inhibit mode | Switching into inhibit mode via controller |
| Binary transmission of address via green/red LED | Address identification | During address identification mode |
| Green and red off | Emergency mode | Battery operation (Emergency mode) |

Instructions for automatic test option

1. Instruction for Automatic test function

Once the unit is powered up, a self-diagnostics test will be automatically initiated:

- Check battery, lamp, charge board and transfer fault all the time.
- Run 3mins duration test every month.
- Run 1H or 3H duration test every year.

Note: All test functions are preset and no need field adjustment.

2. Dual Colour LED Status Indicator Meaning

- Green indicator solid on: Ready/ Normal Operation
- Red indicator flashes: Require service

| | | |
|-------|-------------------------|----------------------|
| • | One flash, 4s pause | Battery disconnected |
| •• | Two flashes, 4s pause | Low battery voltage |
| ••• | Three flashes, 4s pause | Charge board fault |
| •••• | Four flashes, 4s pause | AC/DC transfer fault |
| ••••• | Five flashes, 4s pause | LED lamp fault |

Note: When the fault is recovered, press the test button for 2s, the red flashing indicator will turn green. The fault is cleared, and the unit is back to normal.

3. Button Test

| | |
|-------------------------------------|------------------------------|
| Press test button once | run a 30s duration test |
| Press test button twice within 2s | run a 3mins duration test |
| Press test button 3 times within 2s | run a 30mins duration test |
| Press test button 4 times within 2s | run a 1H or 3H duration test |

LED EXIT SIGN

CE IP20   



Precautions

Normal Operation: The green LED indicator stays on when connected to mains supply. The indicator will turn off when the mains supply fails, or when the internal charger malfunctions, or when the luminaire is in test mode.

Battery: LiFePO4 rechargeable battery pack. Battery should be replaced when it reaches the end of its lifetime. To avoid damage to the luminaire and ensure its performance, the battery should be replaced with same type.

Test Switch: Press the test button, LED indicator will turn off and the luminaire will be powered by the battery pack. The light source is non-replaceable. When the light source reaches the end of its lifetime, the whole luminaire shall be replaced.

Installation Procedure

WARNING

1. Switch off before installation or maintenance.
2. Switch on only after complete installation and examination of the circuit.
3. Professional electrician for installation and maintenance only.
4. This luminaire is not intended for use in high-risk task area lighting.



Read instructions and check you have all the tools and accessories to complete the installation correctly.

Surface Mount (Ceiling/ Wall/ Side mount)

1. Dispart mounting plate.



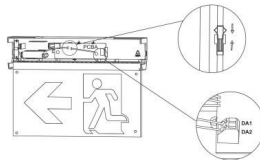
2. ● Wall mount or ● Ceiling mount



3. Connect the AC supply wire to terminal block. Refer to wiring instruction showed as below.



4. Snap the luminaire onto the mounting bracket.



5. Finish installation.



6. Fix side mounting plate on the mount surface with screws & anchor nuts. Fix the luminaire to the side mounting plate.



Recessed Mount

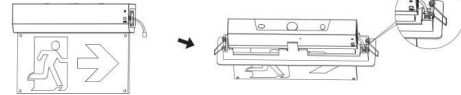
1. Remove the back plate from fixture, then remove hole plug at test switch side.



2. Connect the test switch wire connector on small PCB inside the luminaire.



3. Connect the plug onto the recessed kit.



4. Cut out size: L370 x W58mm. Fix the luminaire onto the ceiling. Switch on, the green LED indicator will be on.



Pendant Mount

1. Knock out the screw holes and fix steel wire rope on the mounting bracket and the ceiling at both ends.



2. Adjust the rope to suitable length before fixing the screws.



3. Connect the AC supply wires to the terminal, plug



4. Snap the luminaire onto the mounting bracket.

